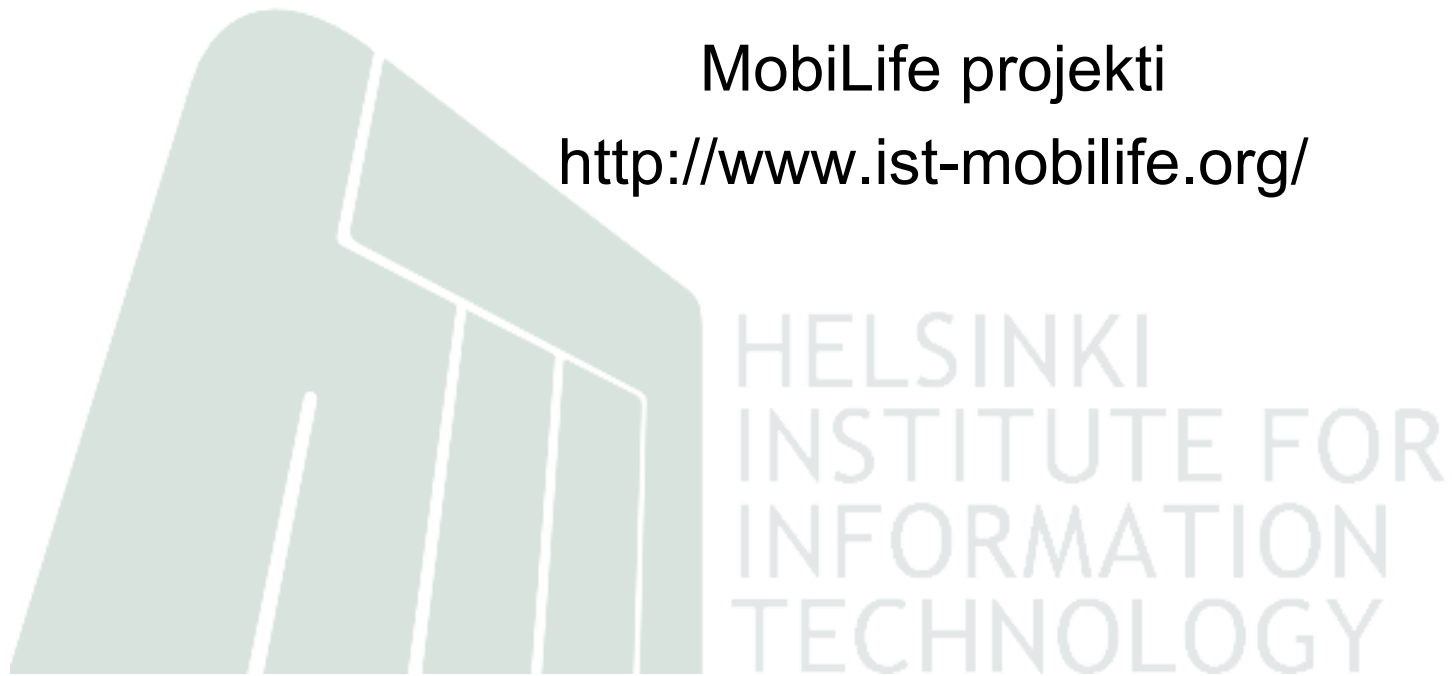


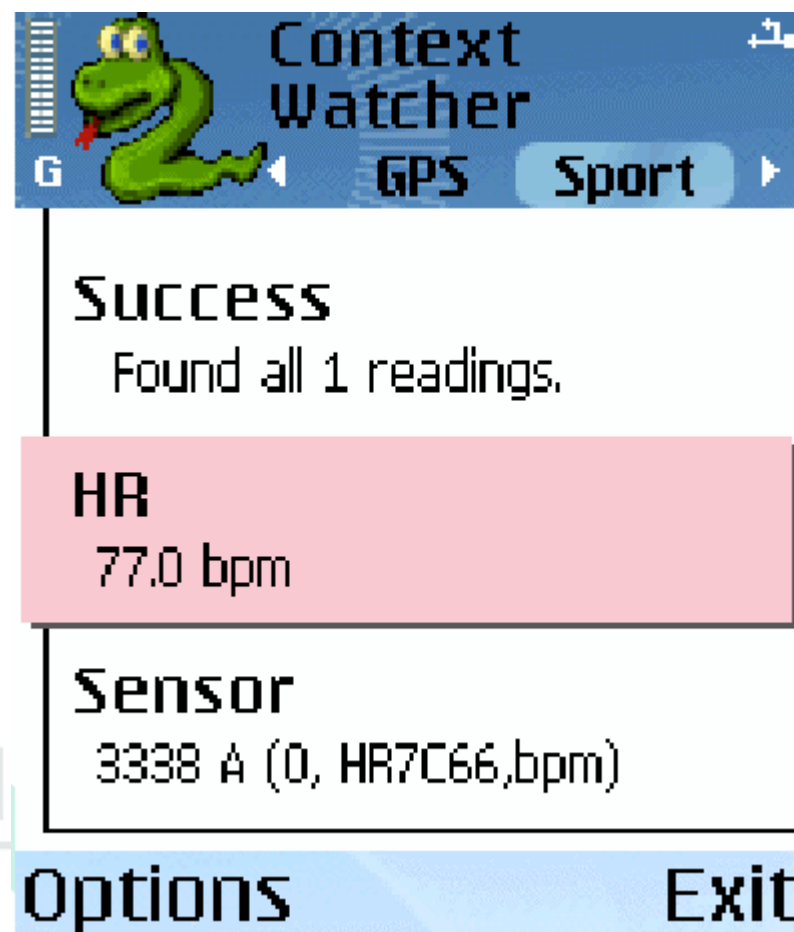
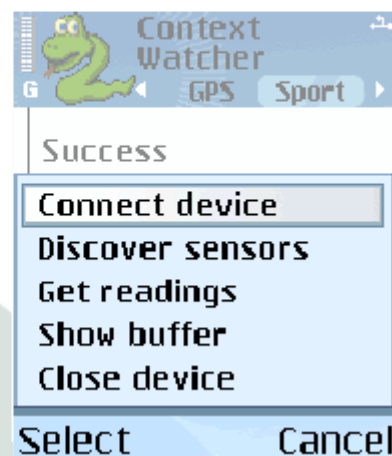
Context Watcher

MobiLife projekti

<http://www.ist-mobilife.org/>



Sensoritiedon keruu



Sensori- ja kontekstitiedon jakaminen



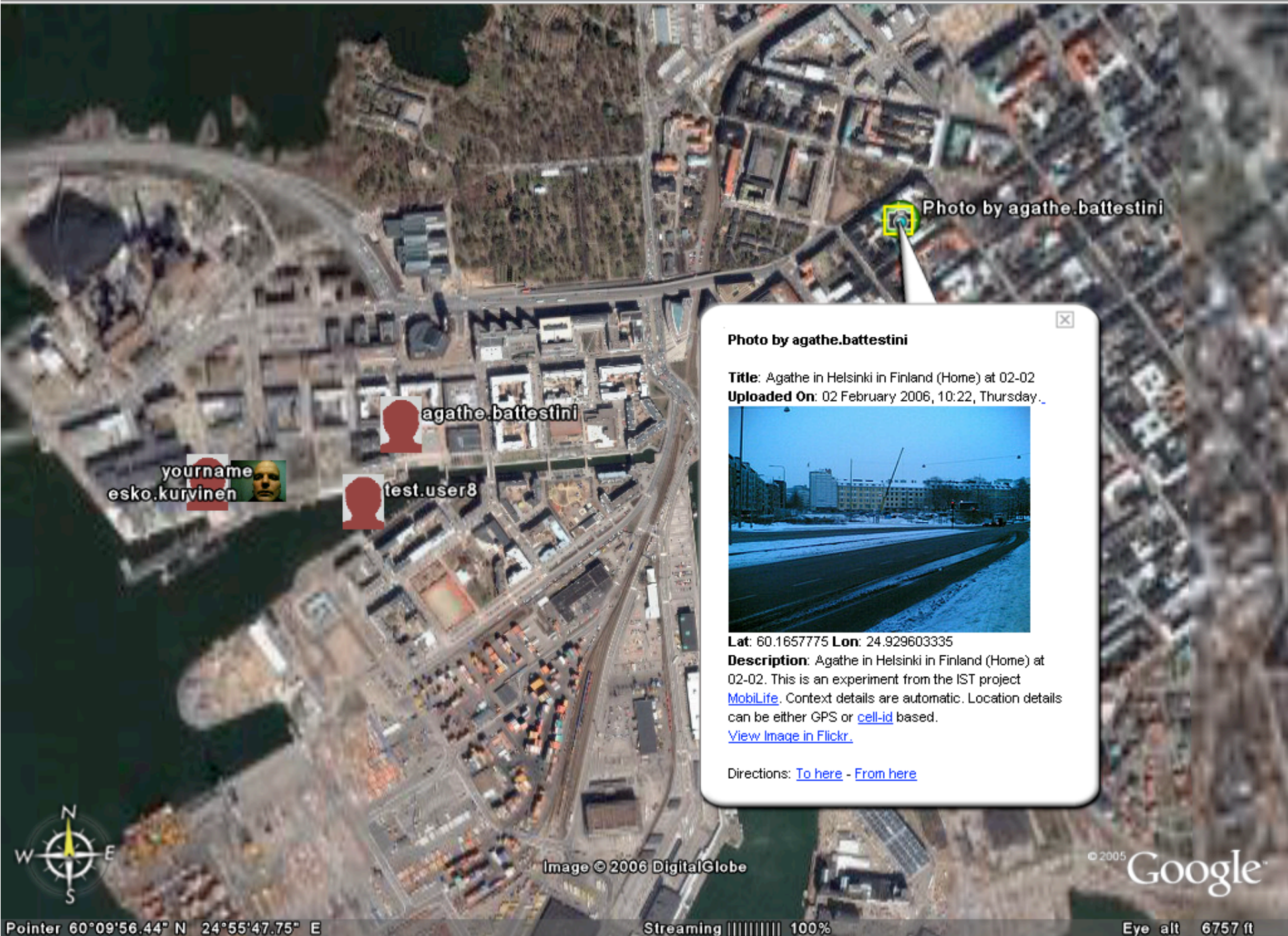


Photo by agathe.battestini

Photo by agathe.battestini

Title: Agathe in Helsinki in Finland (Home) at 02-02
Uploaded On: 02 February 2006, 10:22, Thursday, ..



Lat: 60.1657775 Lon: 24.929603335

Description: Agathe in Helsinki in Finland (Home) at 02-02. This is an experiment from the IST project [MobilLife](#). Context details are automatic. Location details can be either GPS or [cell-id](#) based.
[View Image in Flickr.](#)

Directions: [To here](#) - [From here](#)



Image © 2006 DigitalGlobe

© 2005 Google

Pointer 60°09'56.44" N 24°55'47.75" E

Streaming ||||| 100%

Eye alt 6757 ft

esko.kurvinen



Address: Kellosaarenranta, Helsinki, Finland.



Last Location Update: 01 March 2006, 07:48, Wednesday.

PRESENCE

Availability: Busy

Mood: Bored

Others: Commuting:Not;Doing:Stuff;

Last Presence Update: 01 March 2006, 08:14, Wednesday.

Images

Latest 3 Images. Total Images: 53



[View All Flickr Imgs](#)

Directions: [To here](#) - [From here](#)

esko.kurvinen
yourname



agathe.battestini

y agathe.battestini



Photo by esko.kurvinen



Image © 2006 DigitalGlobe

© 2005 Google™

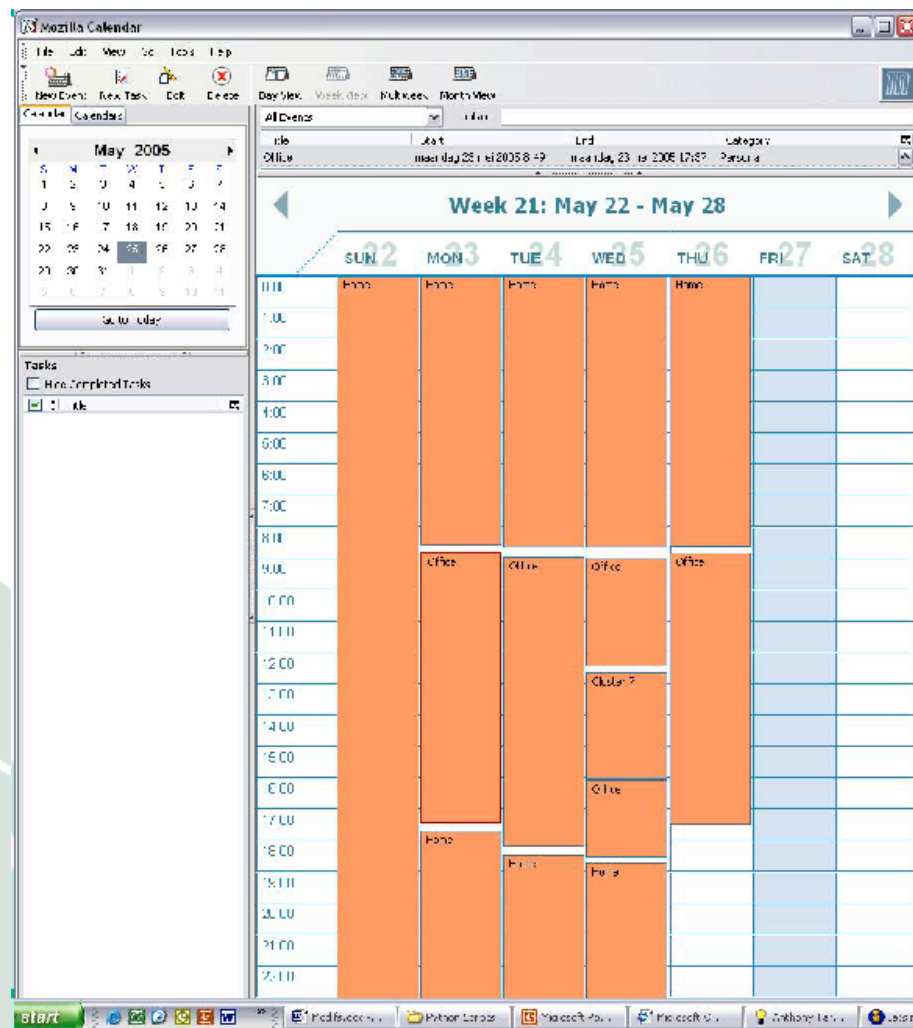
Photo by esko.kurvinen Photo

Pointer 60°09'43.59" N 24°57'02.37" E

Streaming ||||| 100%

Eye alt 18003 ft.

Automaattiset kalenterimerkinnät



Autoblogg



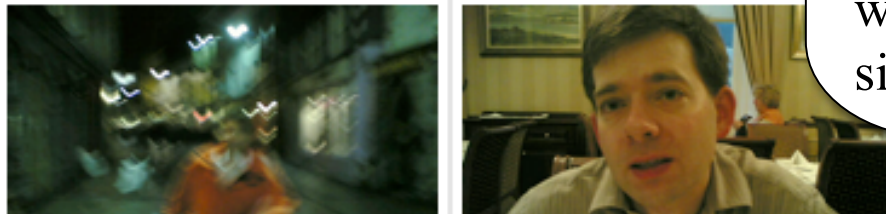
DoCoMo Euro-Labs

C) at 11-11

FRIDAY, NOVEMBER 11, 2005

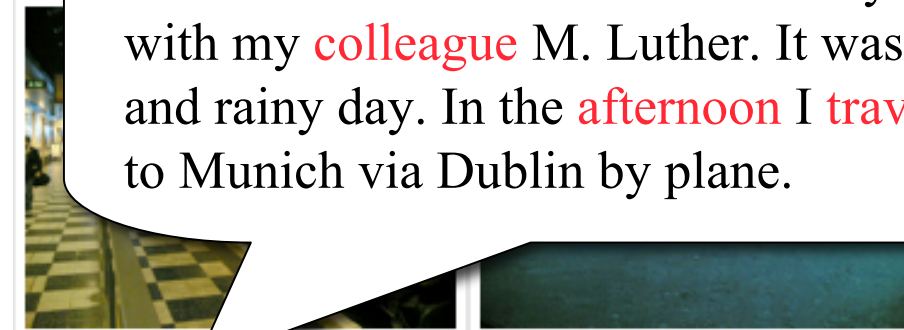
A busy ISWC day

Today was a busy ISWC day (84.1% covered). I took 9 pictures in Galway.



weather_cond=light_fog
temperature=cold
weather=**unpleasant**
daylight=yes
time=**afternoon, business_hours**
location=**conference**
with=**colleague luther**
situation=**business_trip**

Today was the **last day** of my **business trip** to the ISWC'05 **conference** in Galway together with my **colleague** M. Luther. It was a cold and rainy day. In the **afternoon** I **traveled back** to Munich via Dublin by plane.



I visited Galway (51.8%), München (7.3%), Dublin (18.9%) and Offaly (9.9%), mainly Commute (5.2%) and ISWC (35.1%). I met luther (38.7%). My maximum speed was 131.2 km/h.

POSTED BY MATTHIAS AT 1:01 PM 0 COMMENTS



geotagged [x]
geo:lat=53.274136026154 [x]
geo:lon=-9.0451097423077 [x]
geo:range=261 [x]
address:street=Fairgreen Road [x]
address:postalcode= [x]
Galway [x]
Ireland [x]
context:cluster=ISWC [x]
context:nearbyBuddy=luther [x]

Galway in Ireland (ISWC) at 11-11, together with luther. This is an automatic location from the IST project [MobiLife](#). Context details are automatic. Location details can be either GPS or [cell-id](#) based.

INSTITUTE FOR INFORMATION TECHNOLOGY



MobiLife <http://www.ist-mobilife.org/>

Keskustelu

- Sensori- ja kontekstiedon keruuseen, jakamiseen ja hyväksikäyttöön liittyviä sovelluksia rakennetaan aktiivisesti ympäri maailman
- *Viestintä* tai ajatus *viestistä* (perinteisessä mielessä) ovat vain osa syntymässä olevaa isompaa kokonaisuutta
- Sivutuotteena syntyy (pienempiä ja suurempia) 'henkilörekistereitä'
- Kerättyjen tietojen pohjalta ihmiset tai järjestelmät voivat tehdä erilaisia päätelmiä käyttäjästä
- Teknologialla on hyvät ja huonot puolensa. Mitä ne ovat? Miten edistää hyviä asioita ja estää epätoivottuja?